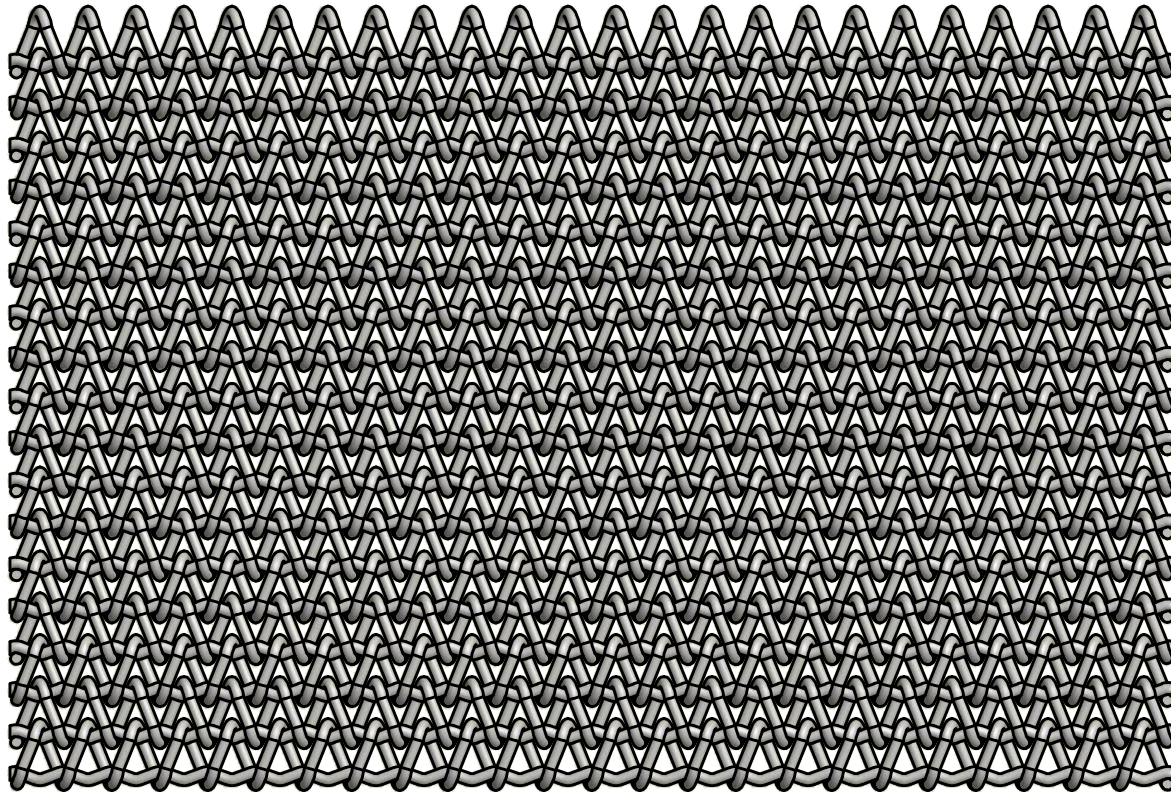



BELT SPECIFICATIONS

Crimp Wire Size: 0.062 Inches [1.59 mm]
 Spiral Wire Size: 0.062 Inches [1.59 mm]
 Lateral Pitch: 0.25 Inches [6.4 mm]
 Longitudinal Pitch: 0.22 Inches [5.5 mm]



DRAWN FULL SCALE

| | | | | |
|--|---------|---|--------------------------------------|----------|
| DO NOT SCALE DRAWING | |  Ashworth 450 ARMOUR DALE, WINCHESTER, VA 22601 | Ashworth Bros., Inc. | |
| APPROVALS | DATE | | TITLE Woven Belt B48-55-16 | |
| DRAWN | witrinc | 7/25/2013 | | |
| UNLESS OTHERWISE SPECIFIED DIMENSIONS ARE IN <u>INCHES</u> . TOLERANCES: .X = ± .03 FRACTION ± 1/16 .XX = ± .015 ANGLES ± 1/2° .XXX = ± .005 .XXXX = ± .0005 SURF FINISH 63 ✓ | | SIZE | DWG. NO. | REV. |
| | | A | 19-4077 | B |
| CAD/FILE NAME | | SCALE | CALC.WT | SHEET |
| Balanced Weave Assy.idw | | 1 : 1 | N/A | 1 OF 1 |