



SMALL RADIUS HEAVY-DUTY OMNI-GRID[®] 360

ASHWORTH DOES ALL THE HEAVY LIFTING!

YOUR TRUSTED PARTNER FOR SUCCESS

Companies around the world depend on Ashworth's quality products, reliable customer service, and innovative solutions to resolve problems and increase productivity. Ashworth Factory Service offers a full range of engineering services, including system refurbishment, troubleshooting, and belt installation.

Ashworth Bros., Inc.
450 Armour Dale
Winchester, VA 22601
Phone: 540-306-5328
Toll Free: 800-682-4594

Ashworth Belts B.V.
Gyroscoopweg 118
1042 AZ Amsterdam,
The Netherlands
Tel: +31 (0)20 5813220

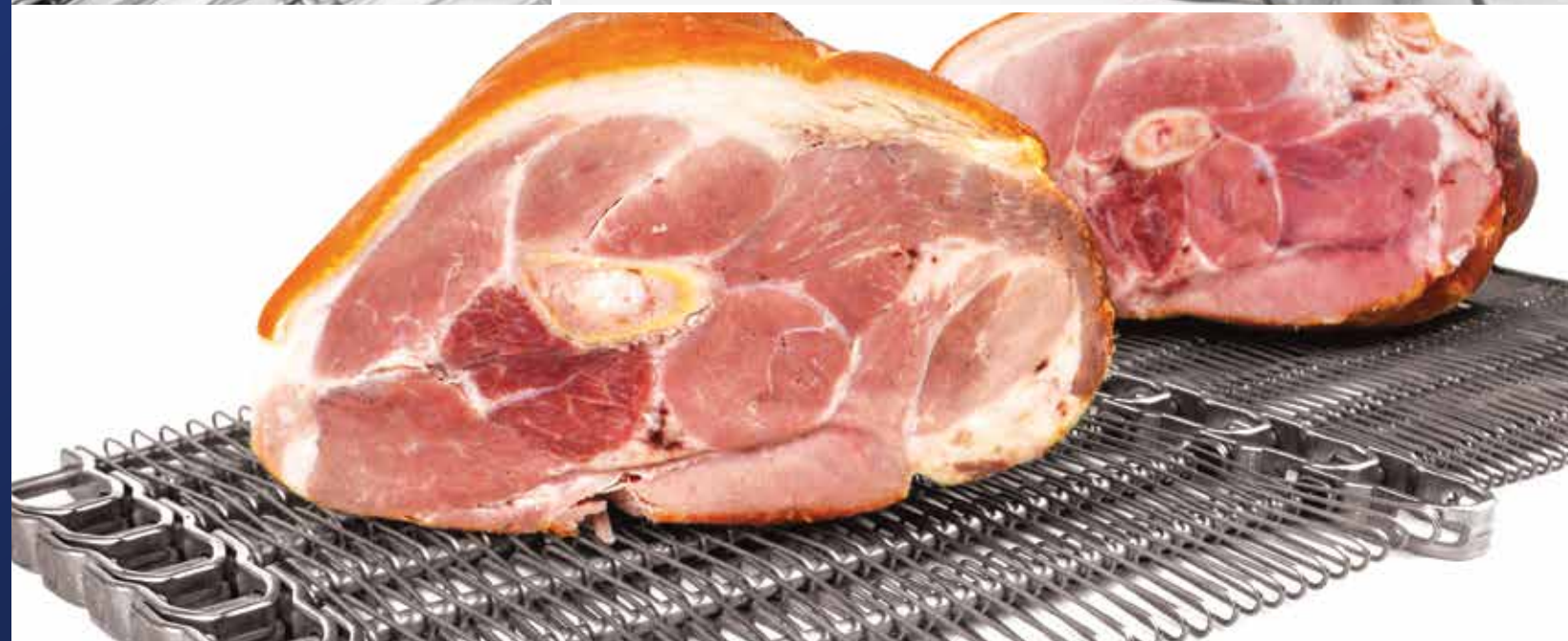
Ashworth Europe, Ltd
Unit 1, The Washington Centre
Halesowen Road, Netherton
West Midlands, U.K. DY2 9RE
Tel: +44 1 384 355000

Ashworth Factory Service
1405 Cannon Cir #15
Faribault, MN 55021
On-call 24/7: +1-866-204-1414
Fax: +1-507-334-3300

ASHWORTH.COM



ASH_US_HeavyDuty_0425_001



THE HIGHEST TENSION RATED BELT IN THE SMALL RADIUS BELT MARKET

The Small Radius Heavy-Duty Omni-Grid® 360 Weld is made up of strong rods and links, designed for durability. The center row of heavy-duty links creates two lanes for products, with sturdy, heavy-duty collapsing links on the inside edge and heavy-duty collapsing bar links on the outside edge. Every link offers a secure single weld.

With 360-degree welds, the heavy-duty links provide extra strength, making the belt ideal for spiral, low-tension, and turn-curve applications. The Small Radius Heavy-Duty Omni-Grid 360 Weld is available with a turn ratio ranging from 1.0 to 1.59 times the belt width.

FEATURES & BENEFITS

- **Most Durable:** The Small Radius Heavy-Duty Omni-Grid 360 is the strongest metal belt in the industry with a radius tension rating of 400 lbs.
- **Proven Reliability:** All Ashworth belts are tested for 100,000 cycles versus competition tests of only 50,000 cycles.
- **Added Strength & Easy to Clean:** Patented zero-tension, 360° buttonless welds increase load bearing capacity and are easier to clean versus traditional bridge welds.
- **Increased Belt Life:** Coining feature reduces break-in wear and increases belt life.
- **Small Radius Design:** Widest width, tightest turning and strongest small radius belt available.

APPLICATIONS



FREEZER



COOLER



PROOFER

ENGINEERED FOR HIGHER STANDARDS

Small Radius Heavy-Duty Omni-Grid conveyor belts can negotiate a much tighter turn than regular Omni-Grid belts. In general, the inside radius can be equal to 1.1 times the belt width, making Small Radius Heavy-Duty Omni-Grid ideal for use in applications where heavy product loads or floor space is limited. Small Radius Heavy-Duty Omni-Grid can turn either left or right, pivoting about a center link.

OMNI-GRID LINK

Patented Zero Tension, 360° Buttonless Weld

Cross-section of 360° Buttonless Weld

COMPETITOR LINK

Traditional Bridge-Tension Weld

Cross-section of Traditional Bridge Weld

SMALL RADIUS HEAVY-DUTY OMNI-GRID 360 WELD 150	
Turn Ratio	1.1 to 1.59
Pitch	1.50" (38.1 mm)
Widths – Spiral or Curve	30" - 60" (760 mm - 1,525 mm)
Widths – Straight Run	N/A
Link Height & Thickness	0.59" x 0.128" (15.0 mm x 3.3 mm)
Rod Diameter & Material	0.236" (6.0 mm) stainless steel
Conveying Surface	3.13" (79.5 mm) less than nominal width (with center links)