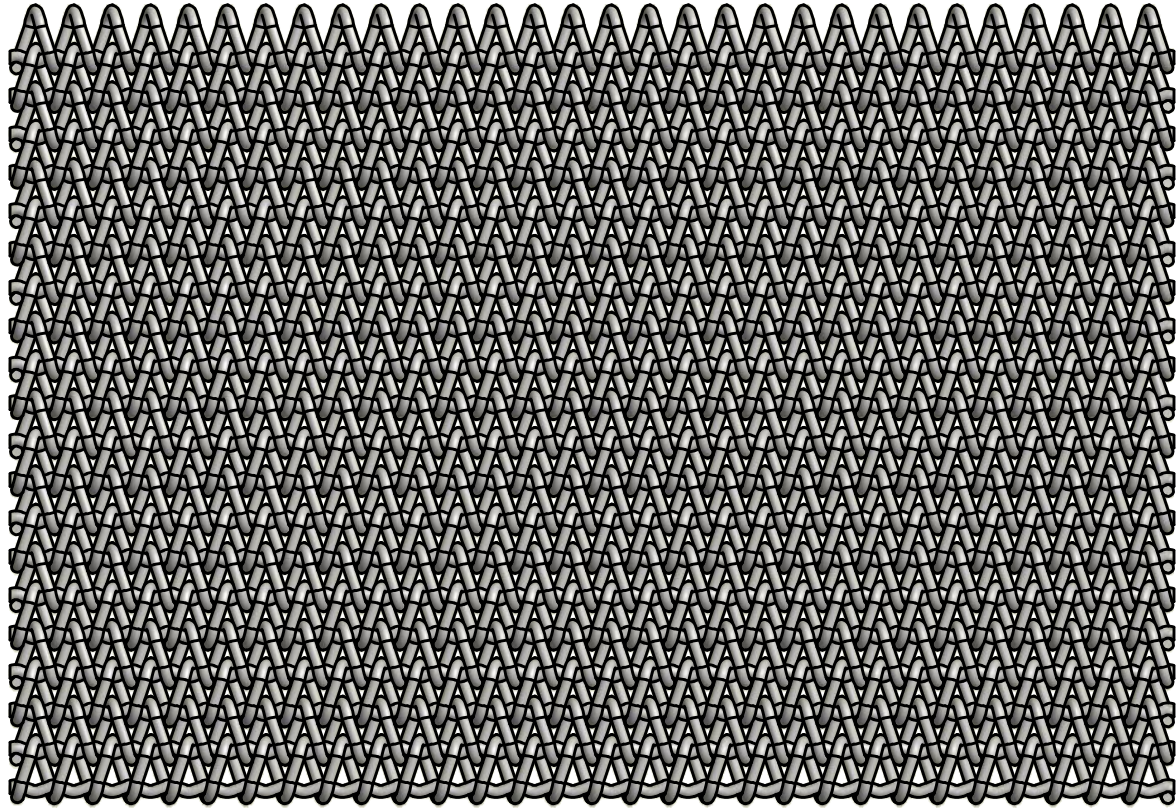



**BELT SPECIFICATIONS**

Crimp Wire Size: 0.062 Inches [1.59 mm]  
 Spiral Wire Size: 0.062 Inches [1.59 mm]  
 Lateral Pitch: 0.2 Inches [5.1 mm]  
 Longitudinal Pitch: 0.2 Inches [5.1 mm]



**DRAWN FULL SCALE**

DO NOT SCALE DRAWING			<b>Ashworth Bros., Inc.</b> 450 ARMOUR DALE, WINCHESTER, VA 22601	
APPROVALS	DATE		TITLE	
DRAWN witrinc	7/25/2013	<b>Woven Belt B60-60-16</b>		
UNLESS OTHERWISE SPECIFIED DIMENSIONS ARE IN <u>INCHES</u> . TOLERANCES: .X = ± .03      FRACTION ± 1/16 .XX = ± .015      ANGLES ± 1/2° .XXX = ± .005 .XXXX = ± .0005      SURF FINISH 63 ✓		SIZE	DWG. NO.	REV.
		<b>A</b>	<b>19-4272</b>	<b>B</b>
CAD/FILE NAME Balanced Weave Assy.idw		SCALE <b>1 : 1</b>	CALC.WT N/A	SHEET 1 OF 1