

# FLAT WIRE

HYGIENIC AND SANITARY CONVEYOR BELTING

## YOUR TRUSTED PARTNER FOR SUCCESS

Companies around the world depend on Ashworth's quality products, reliable customer service, and innovative solutions to resolve problems and increase productivity. Ashworth Factory Service offers a full range of engineering services, including system refurbishment, troubleshooting, and belt installation.

Ashworth Bros., Inc.  
450 Armour Dale  
Winchester, VA 22601  
Phone: 540-306-5328  
Toll Free: 800-682-4594

Ashworth Belts B.V.  
Gyroscoopweg 118  
1042 AZ Amsterdam,  
The Netherlands  
Tel: +31 (0)20 5813220

Ashworth Europe, Ltd  
Unit 1, The Washington Centre  
Halesowen Road, Netherton  
West Midlands, U.K. DY2 9RE  
Tel: +44 1 384 355000

Ashworth Factory Service  
1405 Cannon Cir #15  
Faribault, MN 55021  
On-call 24/7: +1-866-204-1414  
Fax: +1-507-334-3300



ASHWORTH.COM

ASH\_US\_Flatwire\_0225\_001



# FLAT WIRE

**ENGINEERED AND MANUFACTURED TO STRICT TOLERANCES RESULTING IN A LONGER BELT LIFE.**

Ashworth began manufacturing flat wire conveyor belts in 1951, and they are still among the most versatile and most economical straight-running belts available.

## FEATURES & BENEFITS

### Efficient Performance:

- Maximum open area minimizes spray deflection.
- Versatile to suit most applications: standard weight and heavy duty variants are available.

### Proven Reliability:

- Precision manufactured using the industry's tightest tolerances for increased belt life and smooth operation.
- Over 75 years of customer satisfaction.

## DIRECTION



STRAIGHT RUN

## APPLICATIONS



FREEZER



SMOKER



COOLER



COOKER



DRYER



FRYER



PROOFER



BLANCHER



PASTEURIZING



GRADING



TRANSFER



PACKAGING

## PRODUCT OPTIONS

### PIN-UP ATTACHMENTS

Pin-up attachments are flat wire strips that lift the product from the belt surface to prevent undesirable marking. They can also be used to keep the product from sliding on inclines or declines.

### LIMITS FOR USE:

- Maximum height above belt surface is 0.38" (9.5 mm)
- Belt must be supported so that the pinup can pass through the return path

### LIFTS

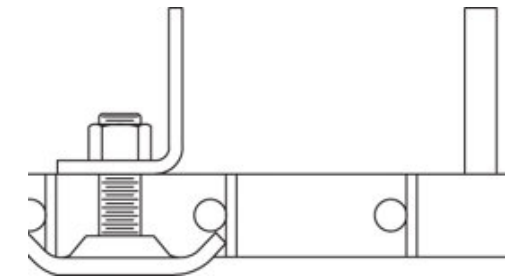
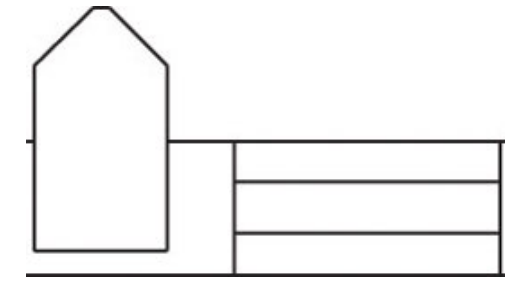
Lift attachments keep the product from sliding on inclines or declines. The formed angle lift uses a flight clip to fasten it to the belt. The flat bar lift is welded to the belt.

### LIMITS FOR USE:

- Maximum Lift Width: Belt Width: - 0.5" (12.7 mm)
- Lift Height: Check with Engineering if greater than 6" (152 mm)
- Lift Thickness: Normal limits are no greater than 0.18" (4.8 mm) or smaller than 0.06" (1.52 mm)
- Minimum Lift Spacing: 2" (50.8 mm)

### BEVELED EDGES

Beveling the edge of the flat wire pickets facilitates product transfer by eliminating or reducing tippage of sharp edge cans or bottles. This option offers advantages on all transfer operations where the terminal roll or sprocket diameter is smaller than 10" (254 mm).



- Belt must be supported so that the lift can pass through the return path

