



YOUR CHALLENGE IS OUR PRIORITY

FAMILY OF PRODUCTS & SERVICES



METAL SPIRAL & TURN-CURVE BELTS



OMNI-GRID 360® WELD

Revolutionary design for paramount safety & durability. The Omni-Grid 360 Weld is the strongest, hygienic, most reliable spiral and turn curve conveyor belt available on the market today. This belt helps to reduce cage bar wear, maintenance costs and downtime in your most demanding high-tension spiral/turn-curve applications while maintaining belt strength integrity.



OMNI-GRID®

The Omni-Grid belts were developed to satisfy the need for a light, easy-to-clean, turn curve belt and for Lotension spiral systems. It's designed to allow for a tighter belt return, smoother small product transfers, and reduces product damage. Guard edges, lane dividers, integral guard edges, and special wire shapes are available.



EXACTASTACK®

Ashworth offers ExactaStack, ExactaStack Wide and ExactaStack XE, standard and wide belt stackers that deliver exact replacement, cost effective, high quality food processing systems. ExactaStack XE is an extra wide belt system offered for companies that need a solution that fits wider than standard belt systems. ExactaStack XE is a quarter-inch wider than our standard belt.



OMNI-FLEX®

Omni-Flex belts are spiral and turn curve metal belts that have been deliver consistent, dependable performance. Constructed with slotted pickets, Omni-Flex belts make right- and left-hand turns, as well as run straight.



OMNI-PRO®

The Omni-Pro belt, with its patented heavy-duty protective links and oversized stainless-steel rods offers high tension ratings with maximum service life. Omni-Pro is also especially hygienic, due to its open all-steel construction and its unique 360° welds, providing a combination of benefits unmatched by the competition.



POSIDRIVE SPIRAL®

PosiDrive Spiral is an alternative to Lotension drive systems and features a stainless-steel grid belt with driving tabs on the inside edge. Ashworth's PosiDrive Spiral is recommended particularly for applications where product movement is a problem, or where oils or other product characteristics cause operational issues with Lotension drive systems.



SMALL RADIUS OMNI-FLEX®

The Small Radius Omni-Flex is ideal for use in applications where floor space is limited. Small Radius Omni-Flex can turn either left or right (only), pivoting about a center link. Offering a 1.0:1 turn ratio, the small radius Omni-Flex can negotiate a much tighter turn than regular Omni-Flex belts.



SPACE SAVER OMNI-GRID® 100

The belt that runs smoother, stronger, and longer in tight spaces. With the ability to travel both straight and around curves by changing its shape, the Space Saver Omni-Grid offers a maximized product load density without the fear of product damage or overcrowding.

METAL SPIRAL & TURN-CURVE BELTS



SMALL RADIUS OMNI-GRID®

Small Radius Omni-Grid conveyor belts can negotiate a much tighter turn than regular Omni-Grid belts. In general, the inside radius can be equal to 1.1 times the belt width, making Small Radius Omni-Grid ideal for use in applications where floor space is limited. Small Radius Omni-Grid can turn either left or right, pivoting about a center link.



SUPER SMALL RADIUS OMNI-GRID®

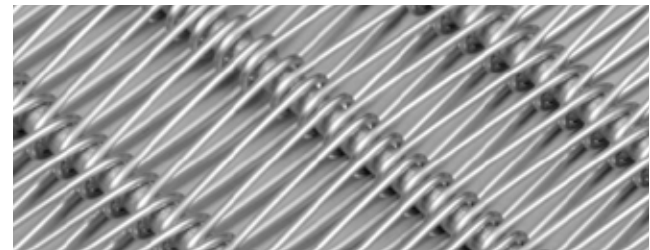
The Super Small Radius Omni-Grid can turn on a radius that is even smaller than the belt width—down to 0.8 times the belt width, the tightest of its kind.

OVERLAY MESH BELTS



HIGH DENSITY MESH

Traditional grid meshes double the mesh density at the connecting rods. Ashworth's patented high density mesh consists of spirals with special intermediate loops to create more product support while at the same time reducing the mesh weight allowing for heavier product loads.



OMNI-TOUGH®

Omni-Tough is a stainless-steel high tensile spring wire overlay for Ashworth Omni-Grid line of belts. It's 2.5 times stronger and more damage resistant than conventional wire overlays without adding weight. Omni-Tough provides a flatter surface than standard overlays and is also resistant to products sticking in freezer applications.

POSITIVE DRIVE BELTS



CLEATRAC® BELT & SPROCKET SYSTEM

Known for the industry's tightest transfer, Ashworth's Cleatrac belt and sprocket system is the perfect food processing solution to accurately transfer small products and minimize product damage. A variety of meshes offer various opening sizes for proper product support and airflow.



EYE-LINK BELTS

Ashworth OGB and OGB-L Plus are straight running, positively driven, quality eye link belts for either industrial or food processing applications. Available in an exceptionally wide array of materials, wire diameters, surface treatments and accessories, these versatile steel conveyor belts can be designed and manufactured to satisfy the most demanding of applications.



FLAT WIRE CONVEYOR BELTS

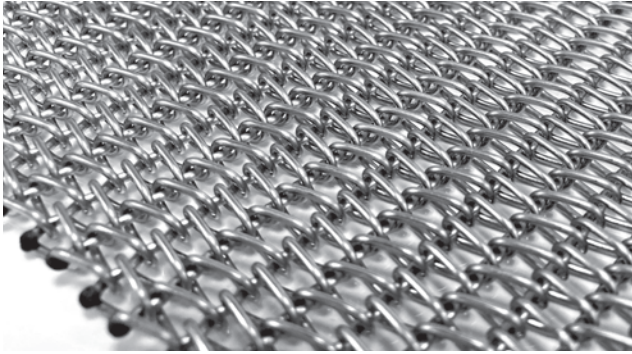
The most versatile and most economical straight-running belts available. Ashworth's Flat Wire Belts are precision manufactured using the industry's tightest tolerances for increased belt life and smooth operation. This belt offers maximum open area for free air flow or water drainage while minimizing spray deflection. This belt is versatile to suit most applications, offers a standard weight and is available with heavy duty variants.



POSITIVE DRIVE CHAIN EDGE (PDCE)

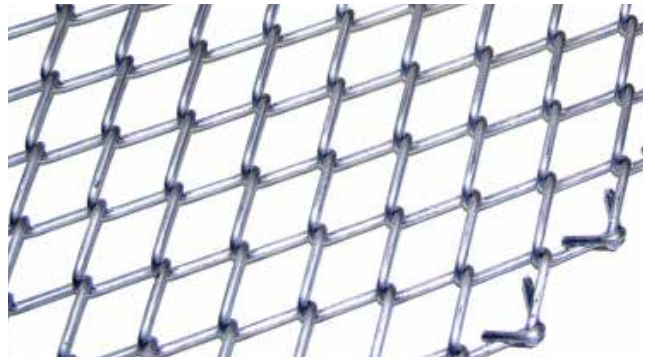
When your application requires positive drive, indexing or synchronization, a chain edge design is the practical choice. Positive drive conveyor belt assemblies employing a chain edge are also widely used due to their uniformity in pitch, high tensile strength with relatively light belt/chain weight, and good durability under severe loads.

FRICTION DRIVEN BELTS



BALANCE WEAVE BELTS

Ideal for the baking industry, these belts are popular for conveying a variety of products, particularly those that are small or need a lot of support. Balanced weave conveyor belting can also be used in industrial product processing, transfer and in packaging applications. Balanced Weave belts provide true travel, uniform conveying surface, and resistance to distortion with minimum maintenance.



CONVENTIONAL WEAVE BELTS

These belts are designed for operation over straight-faced terminal pulleys. They are used for light loads, or for product support on chain edge (PDCE) belts.



COMPOUND BALANCE WEAVE (W8) BELTS

The Compound Balance Weave belt offers a dense, smooth surface, with the smallest mesh openings of any woven wire belt.



CB3 BAKING BAND®

The CB3 Baking Band is a flexible baking band that can easily traverse 6-inch terminal rolls commonly used in tortilla ovens.



CB5 BAKING BAND®

The Woven Wire Mesh Belt Offering Decades of Problem-Free Performance. Ashworth manufactures woven wire baking bands using the industry's highest standards and tightest tolerances. The CB5 Baking Band's tightly woven wire mesh offers excellent gas relief with superior product support for all but the most fluid dough.



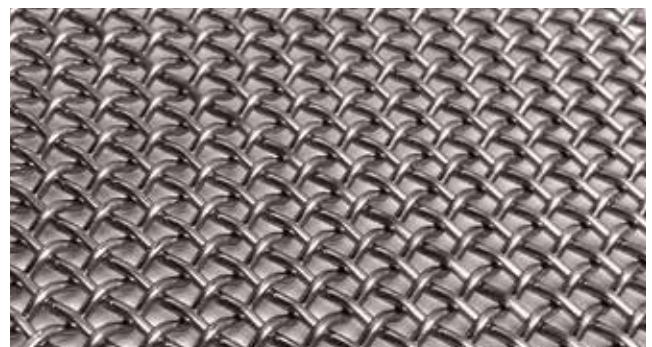
WG WOVEN WIRES

Ashworth Straight Running Friction Driven Belts are woven wire belts that are drum, as opposed to sprocket, driven. Ashworth's woven wire belts are great for food processing or industrial applications.



Z-BAKING BELTS

Designed for convection baking, the Z-Baking Belt has a flat, open surface for direct baking on the belt, making it ideal for cookies and crackers. Available in several wire and mesh type configurations.



S-BELT

S-Belts are woven from round or flattened wire and are available with soldered or brazed selvages. The precision method of weaving ensures the belt will track straight.

PLASTIC BELTS

SPIRALSURF®

Just like their metal counterparts, our SpiralSurf belts can be customized to meet individual requirements for cooling, proofing, and freezer applications. This is a drop in replacement for other plastic spiral belts and can be used in turn-curve and straight run applications.



ADVANTAGE®

The Advantage hybrid conveyor belts combine acetal links and modules with rigid stainless-steel rods, making the Advantage ideal for use in food processing applications where product release and sanitation is critical. The Advantage spiral belts are designed for freezing and cooling applications and offer superior sanitation characteristics and air flow due to the open module design and double slotted links.



OMNI-LITE®

Omni-Lite conveyor belting provides an easy release, low mass plastic conveying surface, while retaining the high strength of the stainless-steel Omni-Grid® base belt. With a near perfect balance between product support and openness for good air flow, Omni-Lite is perfect for freezing and/or conveying small products.



PRESTOFLEX®

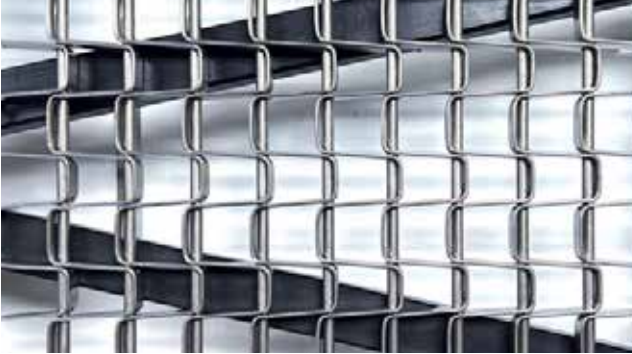
Prestoflex modular plastic conveyor belting comes in two surface options. Used as a hold down mat in can washing, the open grid version provides maximum openness for air and water passage, making it ideal for washing applications. The closed oval version offers a smooth and flat surface with small oval perforations. Plastic sprockets are stocked in convenient sizes.



CHEMGUARD®

An all-plastic modular conveyor belt with a unique connector-less construction specifically designed for long term stability and chemical resistance. Used as a hold down mat in can washing.

ACCESSORIES



CAN BEDLINER

A simple and cost-effective solution to eliminate bed wear and significantly extend belt life. Ashworth bedliners can be made from the same engineered plastics used in our plastic hold-down mats for can washer systems that are highly resistant to chemicals, high temperature, wear, and tear.



TOUGHMAT®

IBO/OBO & DRY-OFF OVEN MATS

ToughMat™ PTFE Coated Oven Mats combine low energy consumption with a superior surface to provide an effective conveying solution for can making operations. The proprietary design and construction ensures a long operating life and uses a fiberglass mesh for ovens and Kevlar® for dry-off ovens.



BELT CONTROL SYSTEMS

Ashworth controls (Model No. 1 and Model No. 2) are designed to preserve the true tracking quality of friction driven belts.



SPROCKETS

Ashworth provides and stocks a broad range of sprockets to fit various belt designs. Available in steel, cast iron, and plastic, both round and square bores are available. Special modifications and designs are available upon request.

SYSTEMS



SMARTSPIRAL® MONITORING SYSTEM

The SmartSpiral® Monitoring System is an innovative application that provides real-time remote monitoring of multiple machines at multiple locations. This system was developed to take the guesswork out of equipment failure with technology based around two top considerations: easy-access and preventing unplanned downtime. Ashworth's SmartSpiral Monitoring System helps to plan and prioritize maintenance costs, identify performance issues, prevent failures, and reduce repair costs.



POSIDRIVE SPIRAL® SYSTEM

Considered to be the original direct drive system, Ashworth designed the PosiDrive Spiral to reduce product movement and eliminate high belt tension caused by oily products. This system allows product dwell time to be easily set using a simplified single speed control and is offered for various cage configurations, making it an ideal solution for retrofits or new spiral systems. PosiDrive Spiral is a reliable, durable solution with user-friendly controls to ensure product alignment and positioning for downstream processing.



SMARTOVEN® MONITORING SYSTEM

A recent addition to Ashworth's "Smart Technology" portfolio is the SmartOven Monitoring System. The SmartOven monitors key metrics that are tracked and trended to identify changes in the equipment's operating parameters. This data is available through your smart phone, tablet, laptop, or desk top computer across multiple systems and multiple plant locations. The goal of this system is to aid in predictive maintenance and eliminate down-time associated with unplanned failures.

VALUE-ADD SERVICES

Companies around the world depend on Ashworth's quality products, reliable customer service, and innovative solutions to resolve problems and increase productivity. Ashworth Factory Service offers a full range of engineering services, including system refurbishment, troubleshooting, and belt installation. Choosing the right belting system is just the beginning. Ashworth's expertise and line of services will keep you up and running through installation, troubleshooting, maintenance and refurbishment of your belt system.

ASHWORTH ENGINEERING SERVICES

Ashworth's Factory Service will ensure that your belting system will continue to operate efficiently for years to come. Our clients have found that our knowledge and commitment to provide them with the best advice and solutions have resulted in saving costs and increasing production.

Ashworth Factory Service is available 24 hours a day, 365 days a year for assistance.



SYSTEM SERVICE

- Application engineering review
- Recommend correct belt
- Analyze belt tensions
- Improve air flow techniques
- Improve capacity
- Spiral reconfiguration
 - Change direction of spiral
 - Lengthen infeed/outfeed
 - Shorten infeed/outfeed
 - Relocate infeed/outfeed
 - Add tiers/change tier pitch
 - Add curve loader conveyors
- Spiral Relocation
 - Relocation of spiral within facility
 - Relocation of spiral to another factory
- Recommend drive/system upgrades

PROACTIVE MAINTENANCE PROGRAM

- Scheduled system audit
 - System recommendations
 - Detailed report history
 - On-site system training
 - Preventing costly downtime

TROUBLE SHOOTING/PHONE SUPPORT

- Available 24 hours a day, 365 days a year
- System corrections or adjustments
- System operations

INSTALLATION & COMMISSIONING

- Belt commissioning
- Turnkey installation
- On-site installation specialist
- Start-up assistance

SYSTEM REFURBISHMENTS

- Emergency repairs
- Spiral upgrades
- System evaluation and belt selection
- Complete replacement
 - Drive/drum bar caps
 - Track cap
 - Cage/drum teeth/drive and idler sprocket/chain
 - Cage/drum bearings
 - Other key components

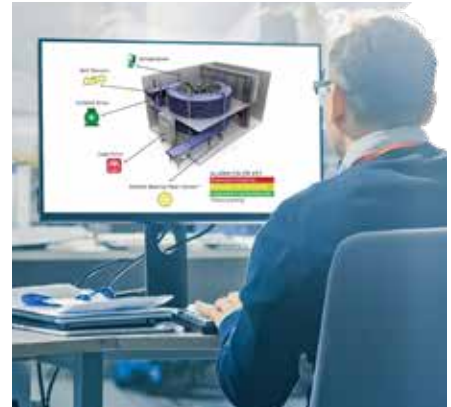
CONTROLS RETROFIT

- Technical support
- Complete control systems
- Revisions to existing systems
- Minor improvements
 - Electronic overdrive control
 - Touch screen improvement
- Safety systems upgrades
 - Freezer worthy

ENGINEERING APPLICATION REVIEWS

Ashworth can evaluate your processing application and recommend conveyor belting to meet your criteria. Ashworth engineers are available to discuss your specific needs with product solutions and system recommendations. Not sure if Ashworth has what you need? Our knowledgeable and skilled engineers will work with you to develop a customized solution. At Ashworth, your challenge is our priority!

- System Review
- Troubleshooting
- Custom Solutions
- Belt Recommendations
- Product Training



YOUR TRUSTED PARTNER FOR SUCCESS

Companies around the world depend on Ashworth's quality products, reliable customer service, and innovative solutions to resolve problems and increase productivity. Ashworth Factory Service offers a full range of engineering services, including system refurbishment, troubleshooting, and belt installation.

Ashworth Bros., Inc.
450 Armour Dale
Winchester, VA 22601
Phone: 540-306-5328
Toll Free: 800-682-4594

Ashworth Belts B.V.
Gyroscoopweg 118
1042 AZ Amsterdam,
The Netherlands
Tel: +31 (0)20 5813220

Ashworth Europe, Ltd
Unit 1, The Washington Centre
Halesowen Road, Netherton
West Midlands, U.K. DY2 9RE
Tel: +44 1 384 355000

Ashworth Factory Service
1405 Cannon Cir #15
Faribault, MN 55021
On-call 24/7: +1-866-204-1414
Fax: +1-507-334-3300