



OMNI-PRO[®]

THE EVOLUTIONARY STAINLESS STEEL SPIRAL CONVEYOR BELT

YOUR TRUSTED PARTNER FOR SUCCESS

Companies around the world depend on Ashworth's quality products, reliable customer service, and innovative solutions to resolve problems and increase productivity. Ashworth Factory Service offers a full range of engineering services, including system refurbishment, troubleshooting, and belt installation.

Ashworth Bros., Inc.
450 Armour Dale
Winchester, VA 22601
Phone: 540-306-5328
Toll Free: 800-682-4594

Ashworth Belts B.V.
Gyroscoopweg 118
1042 AZ Amsterdam,
The Netherlands
Tel: +31 (0)20 5813220

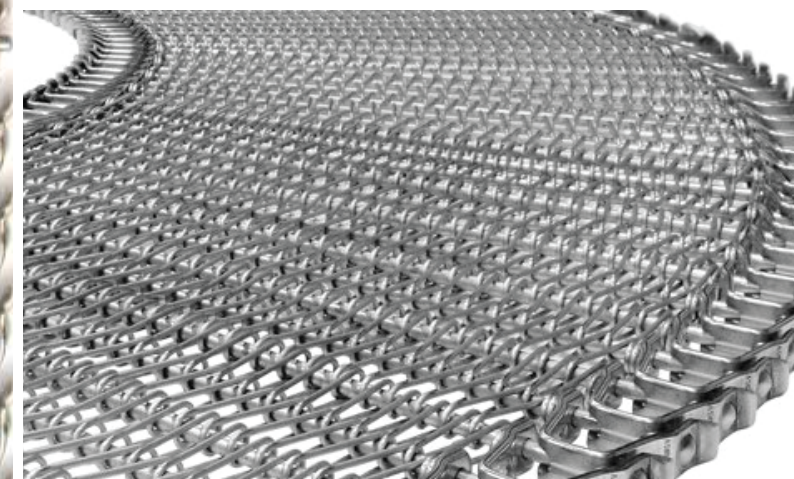
Ashworth Europe, Ltd
Unit 1, The Washington Centre
Halesowen Road, Netherton
West Midlands, U.K. DY2 9RE
Tel: +44 1 384 355000

Ashworth Factory Service
1405 Cannon Cir #15
Faribault, MN 55021
On-call 24/7: +1-866-204-1414
Fax: +1-507-334-3300



ASHWORTH.COM

ASH_US_OMNIPRO_0225_001



OMNI-PRO® 075/100/120/150

COMBINING HIGH TENSION RATINGS WITH MAXIMUM SERVICE LIFE.

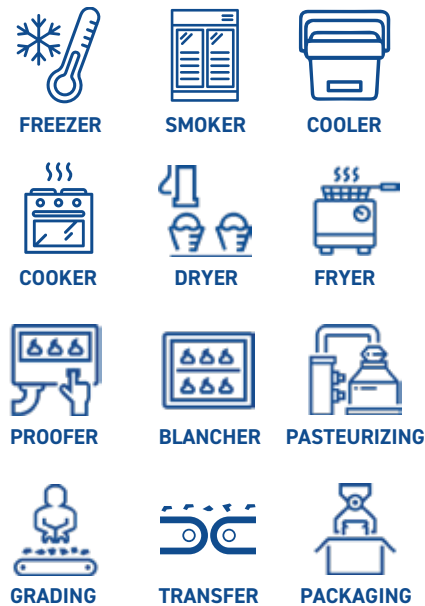
Patented heavy duty protective links combined with oversized stainless-steel rods make Omni-Pro the strongest, most reliable spiral and turn curve conveyor belt available on the market today.

Omni-Pro is also especially hygienic, due to its open all-steel construction and its unique 360° welds. Providing a combination of benefits unmatched by the competition.

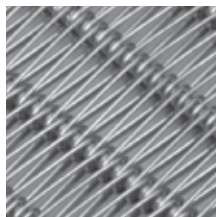
FEATURES & BENEFITS

- **Proven Reliability:** All Ashworth belts are tested for 100,000 cycles versus competition tests of only 50,000 cycles.
- **Reduced Wear:** Patented "protrusion leg" design enables the belt to run smoother with less system wear.
- **Added Strength & Easy to Clean:** Patented zero-tension, 360° buttonless welds increase load bearing capacity and are easier to clean versus traditional bridge welds.
- **Increased Belt Life:** **Coining feature reduces break-in wear and increases belt life.

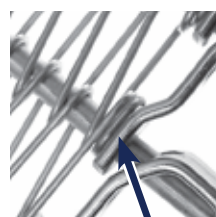
APPLICATIONS



STANDARD FEATURES



**** OMNI-TOUGH MESH OVERLAY**
2½ times stronger than conventional overlays and is resistant to product sticking in freezer applications



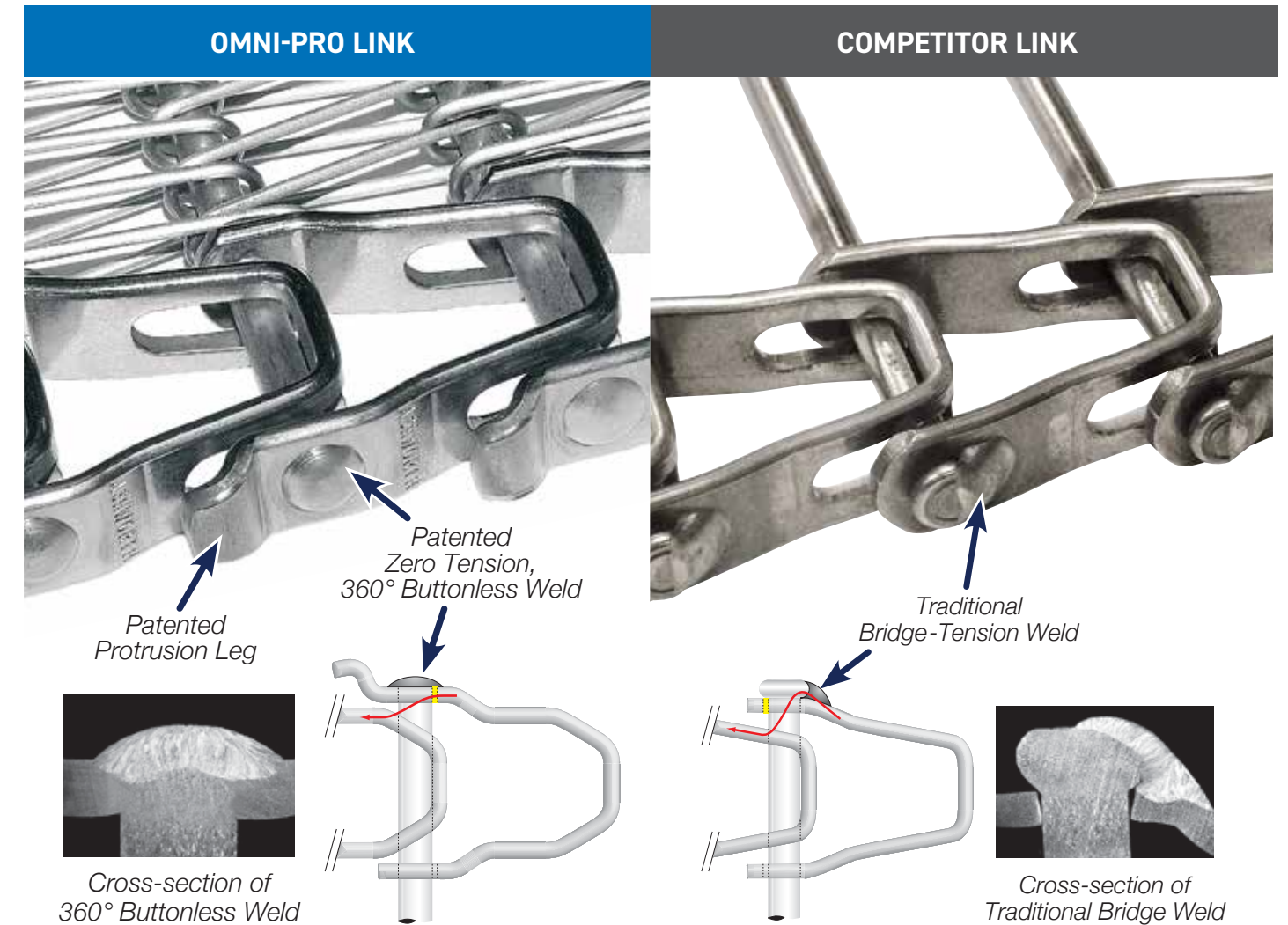
**** PIGTAIL SPIRALS**
Reduces wire breakage



INTEGRAL GUARD EDGES
Available in 100/120/150, are more durable and easier to clean than modular guard edges



****SPECIAL MESH SPIRALS**
A cost effective solution for adding lane dividers or flights



OMNI-PRO®	UNITS	075	100	120	150
Turn Ratio		2.2 to 2.5	1.6 to 2.5	1.7 to 2.8	1.6 to 2.8
Pitch		0.75" (19.1 mm)	1.08" (27.4 mm)	1.20" (30.5 mm)	1.50" (38.1 mm)
Widths - Spiral or Curve		12" - 40" (305 mm - 1,016 mm)		12" - 54" (305 mm - 1,372 mm)	
Widths - Straight Run	in. (mm)	12" - 48" (305 mm - 1,219 mm)		12" - 60" (305 mm - 1,524 mm)	
Link Height & Thickness		0.44" x 0.080" (11.1 mm x 2.0 mm)	0.50" x 0.105" (12.7 mm x 2.7 mm)*	0.59" x 0.118" (15.0 mm x 3.0 mm)	0.59" x 0.128" (15.0 mm x 3.3 mm)
Rod Diameter & Material		0.192" (4.9 mm) stainless ste		0.236" (6.0 mm) stainless steel	
Conveying Surface		2.18" (55.4 mm) less than nominal width		3.13" (79.5 mm) less than nominal width	
Belt Weight	lbs./ft (kg/m)	See Technical Bulletin			
CONVEYOR TYPE	# OF CYCLES				
Spiral or Curve	100,000	in. (mm)	150 lbs. (68 kg)	200 lbs. (91 kg)	400 lbs. (181 kg)
	50,000		175 lbs. (79 kg)	250 lbs. (114 kg)	450 lbs. (204 kg)
Spiral or Curve	100,000	in. (mm)	300 lbs. (136 kg)	400 lbs. (182 kg)	800 lbs. (364 kg)
	50,000		350 lbs. (170 kg)	500 lbs. (227 kg)	900 lbs. (408 kg)

*Link thickness = 0.090" (2.3 mm) for Omni-Pro 100 Reduced Radius with 1.6" Turn-Ratio

**Originally patented by Ashworth Bros., Inc. *Technical Specifications are dependent upon individual applications and are subject to engineering review.